

Insuror Atlas

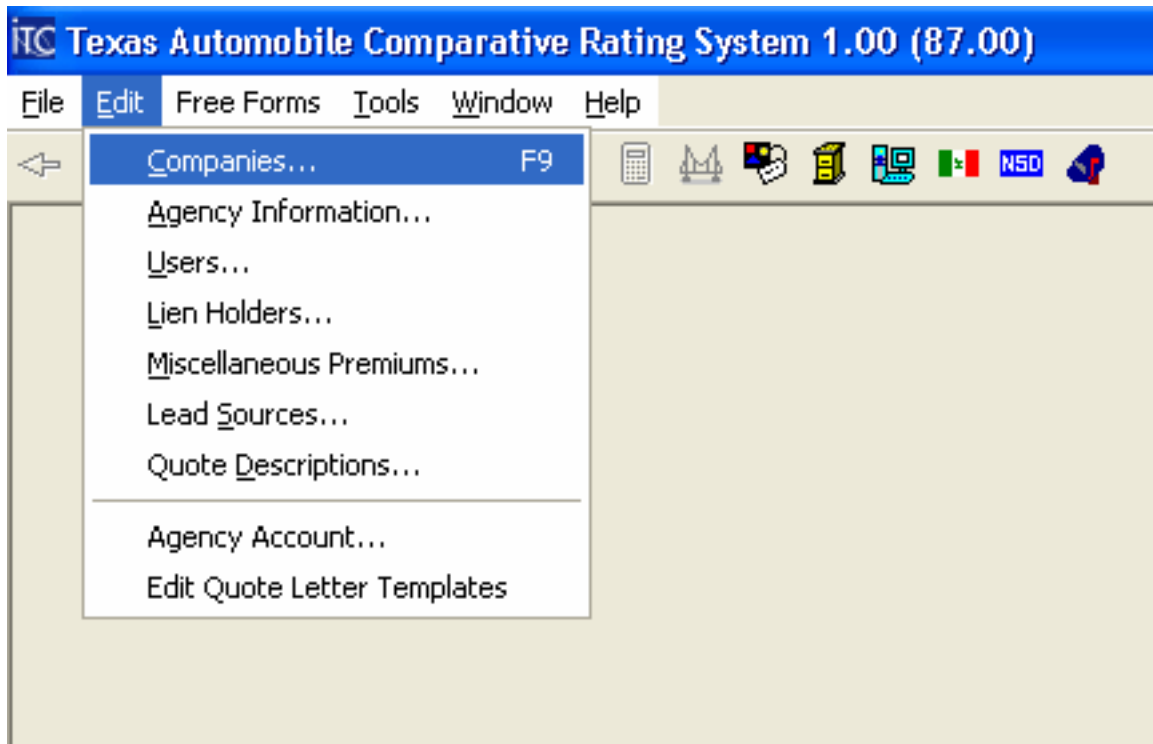


Vision ITC bridge installation manual.

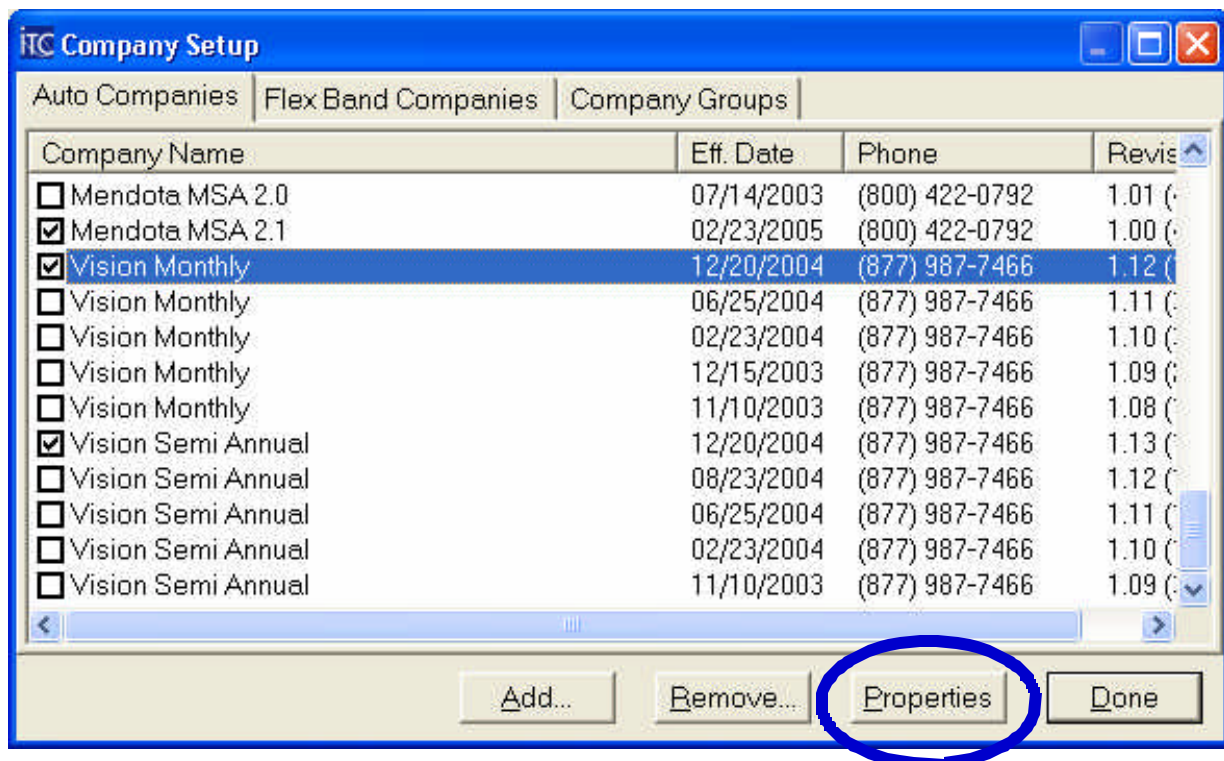


Revised 4/21/2005

Open the ITC rating program. Be sure to close any quotes that are open. Click on the Edit Menu and select Companies.



Select Vision Monthly and click on the Properties button.



Under the Properties window click on the Integration tap on the top.

The screenshot shows the 'Vision Semi Annual Properties' dialog box with the 'Integration' tab selected. The 'Integration' tab is circled in red. The dialog contains the following fields:

Company Name	Effective Date	
Vision Semi Annual	12/20/2004	
Address		
Vision Managing General Agency, Inc.		
P.O. Box 370368		
City	State	Zip Code
El Paso	TX	79937
Primary Phone	Alternate Phone	Fax
(877) 987-7466	(800) 554-0595	(800) 387-8220
World Wide WEB Address	E-Mail Address	
Producer Code	Commission Percentage	
	Not Provided	
Company Code		
County Mutual		
Old American County Mutual Fire Insurance Co.		

Buttons: OK, Cancel, Apply

Click on the Integration Format drop down box and select None then click OK and close ITC.

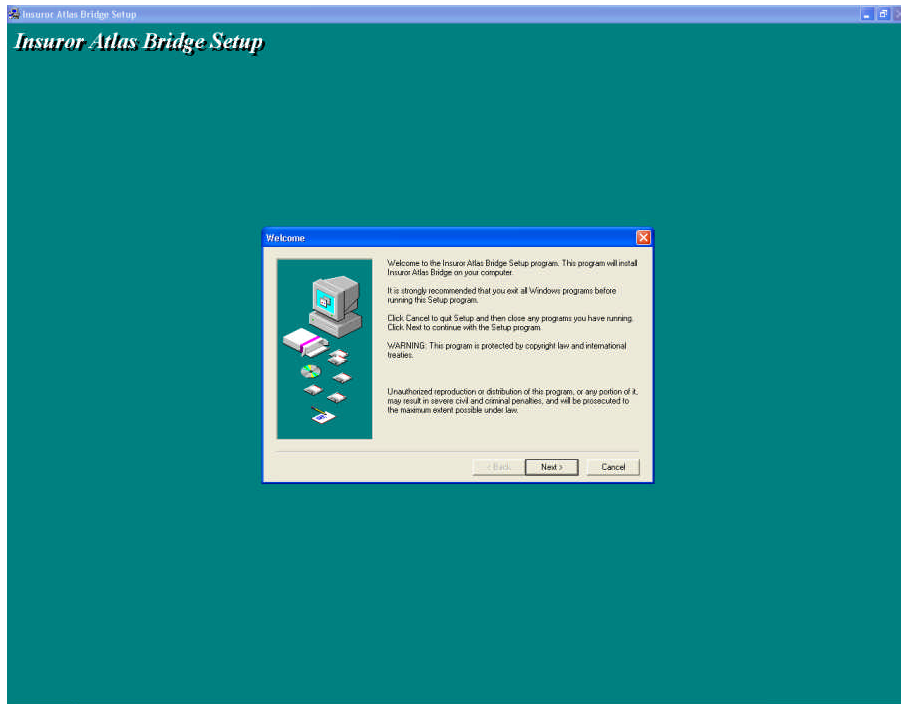
The screenshot shows the 'Vision Semi Annual Properties' dialog box with the 'Integration' tab selected. The 'Integration Format' dropdown menu is open, showing the following options:

- None
- Turbo Tags 1.0
- Turbo Tags Plus 1.0
- Turbo Tags 2.0
- Acord Level III
- Applied Systems V5.0C
- Applied Systems V6.0-6.2
- Applied Systems V6.3

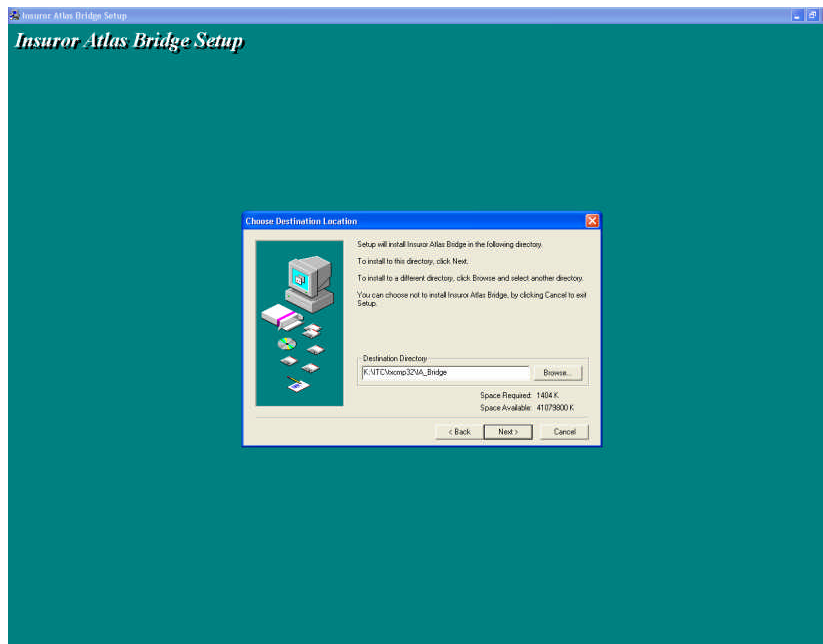
The 'Executable Name' field contains: k:\itc\xcmp32\WISBRIDGE\WISBR

Buttons: OK, Cancel, Apply

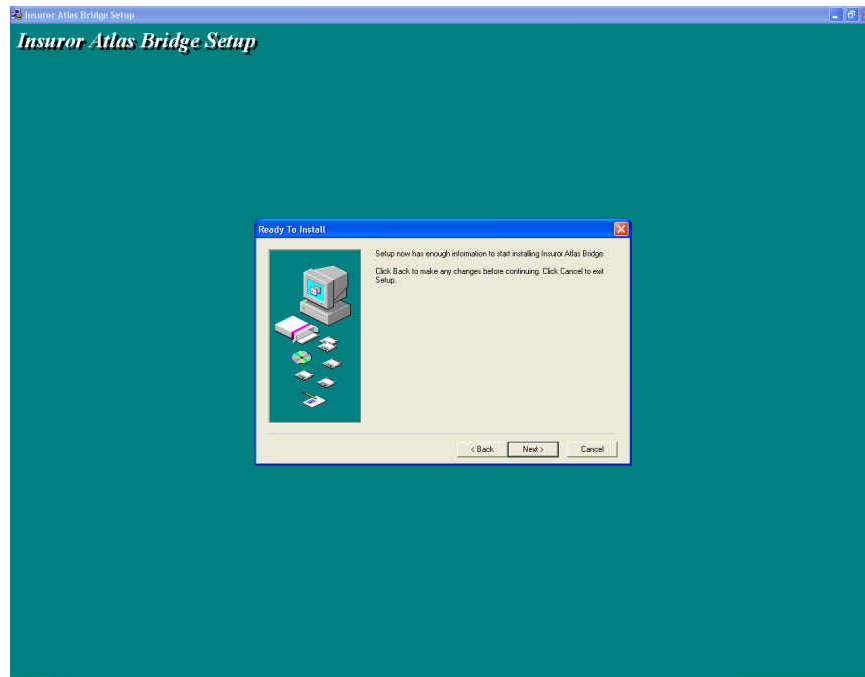
Run the itc_install-live-V1.2.exe file and follow the install wizard.
(Future updates may have slightly different file names) Click Next.



The directory will be preset to the ITC directory. If it is not, locate your ITC folder by clicking on the browse button and select that directory. Click Next.



The program Installation will now begin. Click Next.



Installation is now complete. Click Close.

